

# MP series



# AMILA

## Vacuum suction cup with adapter (φ2–φ50)



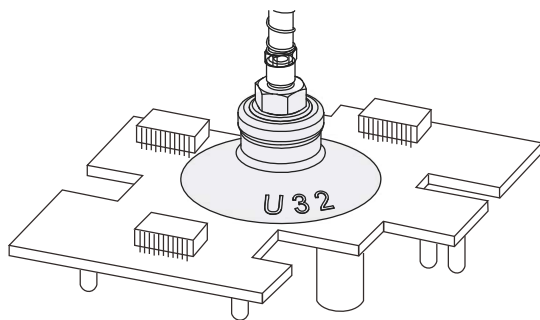
3C product



### Introduction

- ◆ Type U, Type C and Type B are in different shapes to adapt to different applications
- ◆ Special traceless anti-static material
- ◆ Applicable to handling small-sized, lightweight articles in the 3C electronics industry

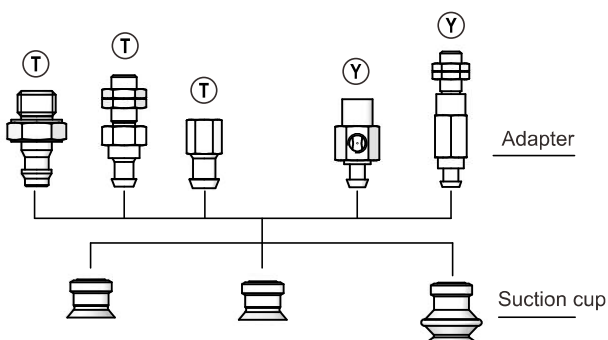
### MP adapter-equipped vacuum suction cups



### Application

- ◆ Type U is suitable for even surfaces unlikely deforming
- ◆ Type C is applicable to suctioning workpieces likely deforming
- ◆ Type B is applicable to suctioning sloping surfaces
- ◆ Applicable to handling cartons, small semiconductor products, spherical objects, food, etc.
- ◆ The special anti-static material is applicable to the electronics industry.

### Applications of MP adapter-equipped vacuum suction cups



### Structure

- ◆ Split structure design, the vulnerable elements can be easily replaced.

### System design of MP cup with adapter

# MP series

## Vacuum suction cup with adapter ( $\phi 2$ – $\phi 50$ )



# AMILA

Vacuum suction

Guide to purchase of vacuum suction cup with adapter MP

### MP T - 02 U N - A5

① ② ③ ④ ⑤ ⑥

① Product series	② Vacuum port direction	③ Size specification	④ Shape specification
MP	Null- Bare suction cup T - Vertical Y - Horizontal	<b>02</b> - $\phi$ 2.0mm <b>16</b> - $\phi$ 16mm <b>04</b> - $\phi$ 4.0mm <b>20</b> - $\phi$ 20mm <b>06</b> - $\phi$ 6.0mm <b>25</b> - $\phi$ 25mm <b>08</b> - $\phi$ 8.0mm <b>32</b> - $\phi$ 32mm <b>10</b> - $\phi$ 10mm <b>40</b> - $\phi$ 40mm <b>13</b> - $\phi$ 13mm <b>50</b> - $\phi$ 50mm	U - Flat B - Bellows-type C - Ribbed-flat type

⑤ Material of suction cup	⑥ Joint specification
N-nitrile rubber S-silicone rubber GN-Anti-static nitrile rubber (Static resistance index: $10^5$ – $10^9$ ) GS- Anti-static silicone rubber (Static resistance index: $10^5$ – $10^9$ ) GHN- traceless conductive nitrile rubber (Static resistance index: $10^5$ – $10^9$ )	Null- Bare suction cup A5- M5×0.8 male thread A6-M6×1 male thread A8- M8×1.25 male thread B4- M4×0.7 female thread B5- M5×0.8 female thread B6- M6×1 female thread B8- M8×1.25 female thread B01- RC1/8 female thread B5-A5- vacuum port with M5×0.8 female thread, fitted to M5×0.8 male thread B5-A6- vacuum port with M5×0.8 female thread, fitted to M6×1 male thread B5-A8- vacuum port with M5×0.8 female thread, fitted to M8×1.25 male thread B5-B4- fitted to M5×0.8 female thread fitted to M4×0.7 female thread

Note: When a bare suction cup is selected, the “vacuum port direction” item will be disabled.

- MP
- MP2-PEEK
- MP2-MT
- MP2-MB
- MP2-AN
- MP2-W
- MP3
- MP-H/HB
- MP3E
- PFG
- MP2-HT
- MPU
- MPC
- MRP
- MPK
- MPLO
- FGA
- FG
- FSGPL
- MAF
- MAB
- MAOF
- MAOB
- MAX
- MAXB
- MPG
- SPB2P
- FGB-R
- MF
- MB
- FDA
- FDB
- MGMX
- MGML
- MGMBH
- MGMBG
- MXC
- MPOBF
- MPB4
- MXD
- MW-HT
- MU
- MPE
- MLE

# MP series



# AMILA

## Vacuum suction cup with adapter (φ2–φ50)

### Model specifications of vacuum suction cup with adapter MP

Model specification	Shape specification			Connection specification							
	U	B	C	T - Vertical							
				A5 M5×0.8 male thread	A6 M6×1 male thread	A8 M8×1.25 male thread	B4 M4×0.7 female thread	B5 M5×0.8 female thread	B6 M6×1 female thread	B8 M8×1.25 female thread	B01 RC1/8 female thread
φ2.0	●	-	-	●	●	-	●	●	-	-	-
φ4.0	●	-	-	●	●	-	●	●	-	-	-
φ6.0	●	●	-	●	●	-	●	●	-	-	-
φ8.0	●	●	-	●	●	-	●	●	-	-	-
φ10	●	●	●	●	●	-	-	●	●	-	●
φ13	●	●	●	●	●	-	-	●	●	-	●
φ16	●	●	●	●	●	-	-	●	●	-	●
φ20	●	●	●	-	●	●	-	●	●	●	●
φ25	●	●	●	-	●	●	-	●	●	●	●
φ32	●	●	●	-	●	●	-	●	●	●	●
φ40	●	●	●	-	●	●	-	-	●	●	●
φ50	●	●	●	-	●	●	-	-	●	●	●

Model specification	Shape specification			Connection specification						
	U	B	C	Y- Horizontal						
				B5-A5 Vacuum port with M5×0.8 female thread fitted to M5×0.8 male thread	B5-A6 Vacuum port with M5×0.8 female thread fitted to M6×1 male thread	B5-A8 Vacuum port with M5×0.8 female thread fitted to M8×1.25 male thread	B5-B4 Vacuum port with M5×0.8 female thread fitted to M4×0.7 female thread	B5-B5 Vacuum port with M5×0.8 female thread fitted to M5×0.8 female thread	B5-B6 Vacuum port with M5×0.8 female thread fitted to M6×1 female thread	B5-B8 Vacuum port with M5×0.8 female thread fitted to M8×1.25 female thread
φ2.0	●	-	-	●	●	-	●	●	-	-
φ4.0	●	-	-	●	●	-	●	●	-	-
φ6.0	●	●	-	●	●	-	●	●	-	-
φ8.0	●	●	-	●	●	-	●	●	-	-
φ10	●	●	●	●	●	-	-	●	●	-
φ13	●	●	●	●	●	-	-	●	●	-
φ16	●	●	●	●	●	-	-	●	●	-
φ20	●	●	●	-	●	●	-	●	●	●
φ25	●	●	●	-	●	●	-	●	●	●
φ32	●	●	●	-	●	●	-	●	●	●
φ40	●	●	●	-	●	●	-	-	●	●
φ50	●	●	●	-	●	●	-	-	●	●

# MP series

## Vacuum suction cup with adapter (φ2–φ50)

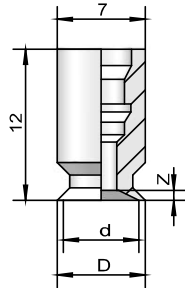


# AMILA

Vacuum suction

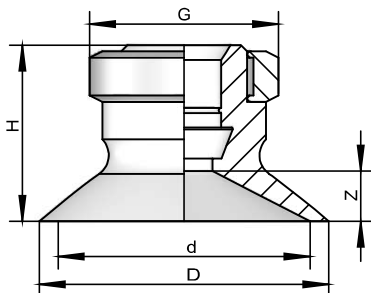
### Design parameters of vacuum suction cup with adapter MP

MP-02 to 08 U



Model	Size (mm)				Weight g
	D	d	Z		
MP-02U □	2.6	2	0.5		0.3
MP-04U □	4.8	4	0.8		0.3
MP-06U □	7	6	0.8		0.4
MP-08U □	9	8	1		0.4

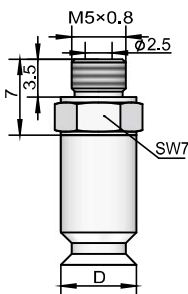
MP-10 to 50 U



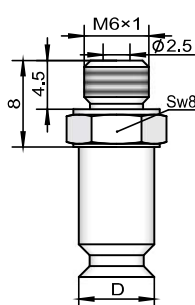
Model	Size (mm)					Weight g
	H	D	d	G	Z	
MP-10U □	12	12	10	13	3	0.8
MP-13U □	12	15	13	13	3	0.8
MP-16U □	12.5	18	16	13	3.5	0.9
MP-20U □	14	23	20	15	4	1.6
MP-25U □	14	28	25	15	4	1.8
MP-32U □	14.5	35	32	15	4.5	2.3
MP-40U □	18.5	43	40	18	6.5	5.5
MP-50U □	19.5	53	50	18	7.5	6.9

### Type-U suction cup (φ2.0–φ8.0mm) - Vacuum port in vertical direction

MPT-02 to 08 U □ -A5  
(M5×0.8 male thread)



MPT-02 to 08 U □ -A6  
(M6×1 male thread)



Model	Size (mm)		Applicable adapter model
	D		
MPT-02U □ -A5(A6)	2.6		MPT1-A5(A6)
MPT-04U □ -A5(A6)	4.8		MPT1-A5(A6)
MPT-06U □ -A5(A6)	7		MPT1-A5(A6)
MPT-08U □ -A5(A6)	9		MPT1-A5(A6)

MP

MP2-PEEK

MP2-MT

MP2-MB

MP2-AN

MP2-W

MP3

MP-H/HB

MP3E

PFG

MP2-HT

MPU

MPC

MRP

MPK

MPLO

FGA

FG

FSGPL

MAF

MAB

MAOF

MAOB

MAX

MAXB

MPG

SPB2P

FGB-R

MF

MB

FDA

FDB

MGMX

MGML

MGMBH

MGMBG

MXC

MPOBF

MPB4

MXD

MW-HT

MU

MPE

MLE

# MP series



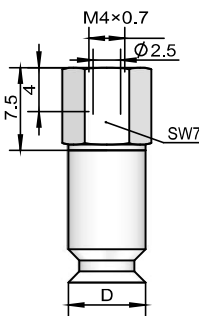
# AMILA

## Vacuum suction cup with adapter ( $\phi 2-\phi 50$ )

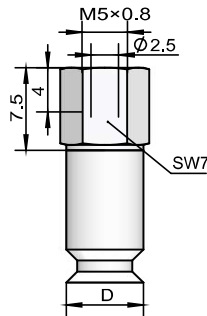
### Design parameters of vacuum suction cup with adapter MP

#### Type-U suction cup ( $\phi 2.0-\phi 8.0\text{mm}$ ) - Vacuum port in vertical direction

MPT-02 to 08 U □ -B4  
(M4×0.7 female thread)



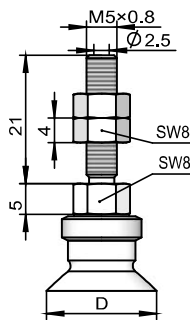
MPT-02 to 08 U □ -B5  
(M5×0.8 female thread)



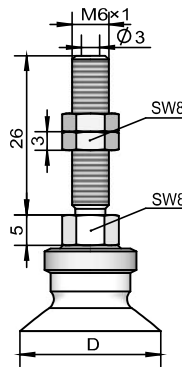
Model	Size (mm)		Applicable adapter model
		D	
MPT-02U □ -B4(B5)	2.6		MPT1-B4(B5)
MPT-04U □ -B4(B5)	4.8		MPT1-B4(B5)
MPT-06U □ -B4(B5)	7		MPT1-B4(B5)
MPT-08U □ -B4(B5)	9		MPT1-B4(B5)

#### Type-U suction cup ( $\phi 10-\phi 50\text{mm}$ )—Vacuum port in vertical direction

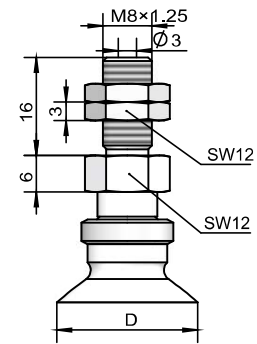
MPT-10 to 16 U □ -A5  
(M5×0.8 male thread)



MPT-10 to 50 U □ -A6  
(M6×1 male thread)



MPT-20 to 50 U □ -A8  
(M8×1.25 male thread)



Model	Size (mm)		Applicable adapter model
		D	
MPT-10U □ -A5(A6)		12	MPT2-A5(A6)
MPT-13U □ -A5(A6)		15	MPT2-A5(A6)
MPT-16U □ -A5(A6)		18	MPT2-A5(A6)
MPT-20U □ -A6(A8)		23	MPT3-A6(A8)
MPT-25U □ -A6(A8)		28	MPT3-A6(A8)
MPT-32U □ -A6(A8)		35	MPT3-A6(A8)
MPT-40U □ -A6(A8)		43	MPT4-A6(A8)
MPT-50U □ -A6(A8)		53	MPT4-A6(A8)

# MP series

## Vacuum suction cup with adapter ( $\phi 2$ – $\phi 50$ )



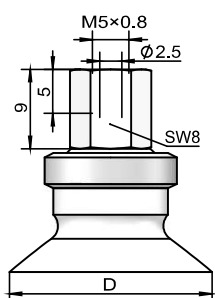
# AMILA

Vacuum suction

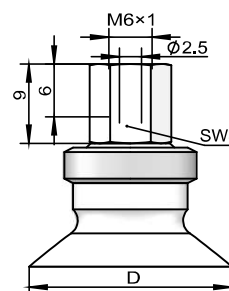
### Design parameters of vacuum suction cup with adapter MP

#### Type-U suction cup ( $\phi 10$ – $\phi 50$ mm)—Vacuum port in vertical direction

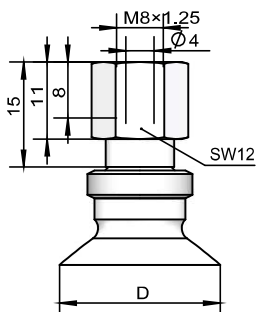
MPT-10 to 32 U □ -B5  
(M5×0.8 female thread)



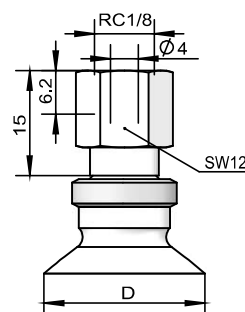
MPT-10 to 50 U □ -B6  
(M6×1 female thread)



MPT-20 to 50 U □ -B8  
(M8×1.25 female thread)



MPT-10 to 50 U □ -B01  
(G1/8 female thread)



Model	Size (mm)		Applicable adapter model
		D	
MPT-10U □ -B5(B6/B01)		12	MPT2-B5(B6/B01)
MPT-13U □ -B5(B6/B01)		15	MPT2-B5(B6/B01)
MPT-16U □ -B5(B6/B01)		18	MPT2-B5(B6/B01)
MPT-20U □ -B5(B6/B8/B01)		23	MPT3-B5(B6/B8/B01)
MPT-25U □ -B5(B6/B8/B01)		28	MPT3-B5(B6/B8/B01)
MPT-32U □ -B5(B6/B8/B01)		35	MPT3-B5(B6/B8/B01)
MPT-40U □ -B6(B8/B01)		43	MPT4-B6(B8/B01)
MPT-50U □ -B6(B8/B01)		53	MPT4-B6(B8/B01)

MP
MP2-PEEK
MP2-MT
MP2-MB
MP2-AN
MP2-W
MP3
MP-H/HB
MP3E
PFG
MP2-HT
MPU
MPC
MRP
MPK
MPLO
FGA
FG
FSGPL
MAF
MAB
MAOF
MAOB
MAX
MAXB
MPG
SPB2P
FGB-R
MF
MB
FDA
FDB
MGMX
MGML
MGMBH
MGMBG
MXC
MPOBF
MPB4
MXD
MW-HT
MU
MPE
MLE

# MP series

## Vacuum suction cup with adapter ( $\phi 2\text{--}\phi 50$ )

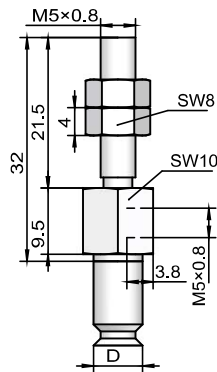


# AMILA

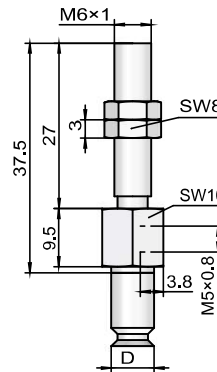
### Design parameters of vacuum suction cup with adapter MP

#### Type-U suction cup ( $\phi 2.0\text{--}\phi 8.0\text{mm}$ )—Vacuum port in horizontal direction

MPY-02 to 08 U □ -B5-A5  
(M5×0.8 male thread)

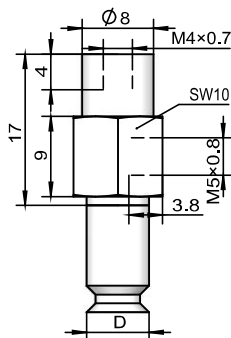


MPY-02 to 08 U □ -B5-A6  
(M6×1 male thread)

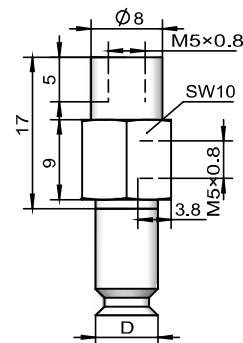


Model	Size (mm)		Applicable adapter model
		D	
MPY-02U □ -B5-A5(B5-A6)		2.6	MPY1-B5-A5(B5-A6)
MPY-04U □ -B5-A5(B5-A6)		4.8	MPY1-B5-A5(B5-A6)
MPY-06U □ -B5-A5(B5-A6)		7	MPY1-B5-A5(B5-A6)
MPY-08U □ -B5-A5(B5-A6)		9	MPY1-B5-A5(B5-A6)

MPY 02 to 08 U □ B5-B4  
(M4×0.7 female thread)



MPY 02 to 08 U □ B5-B5  
(M5×0.8 female thread)



Model	Size (mm)		Applicable adapter model
		D	
MPY-02U □ -B5-B4(B5-B5)		2.6	MPY1-B5-B4(B5-B5)
MPY-04U □ -B5-B4(B5-B5)		4.8	MPY1-B5-B4(B5-B5)
MPY-06U □ -B5-B4(B5-B5)		7	MPY1-B5-B4(B5-B5)
MPY-08U □ -B5-B4(B5-B5)		9	MPY1-B5-B4(B5-B5)

# MP series

## Vacuum suction cup with adapter ( $\phi 2\text{--}\phi 50$ )



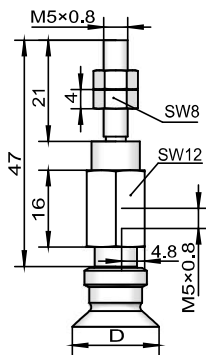
# AMILA

Vacuum suction

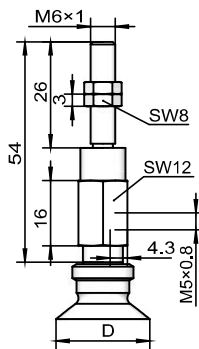
### Design parameters of vacuum suction cup with adapter MP

#### Type-U suction cup ( $\phi 10\text{--}\phi 50\text{mm}$ )—Vacuum port in horizontal direction

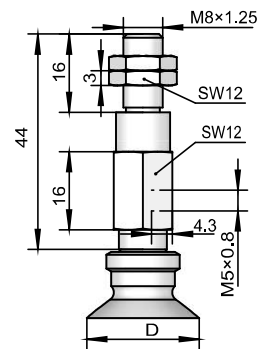
MPY 10 to 16 U □ B5-A5  
(M5×0.8 male thread)



MPY 10 to 50 U □ B5-A6  
(M6×1 male thread)

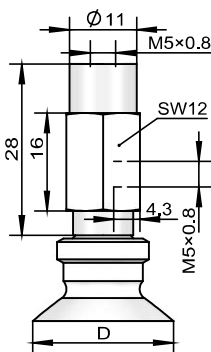


MPY 20 to 50 U □ B5-A8  
(M8×1.25 male thread)

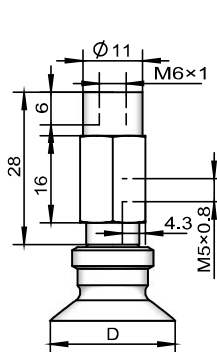


Model	Size (mm)	Applicable adapter model
MPY-10U □-B5-A5(B5-A6)	D 12	MPY2-B5-A5(B5-A6)
MPY-13U □-B5-A5(B5-A6)	D 15	MPY2-B5-A5(B5-A6)
MPY-16U □-B5-A5(B5-A6)	D 18	MPY2-B5-A5(B5-A6)
MPY-20U □-B5-A6(B5-A8)	D 23	MPY3-B5-A6(B5-A8)
MPY-25U □-B5-A6(B5-A8)	D 28	MPY3-B5-A6(B5-A8)
MPY-32U □-B5-A6(B5-A8)	D 35	MPY3-B5-A6(B5-A8)
MPY-40U □-B5-A6(B5-A8)	D 43	MPY4-B5-A6(B5-A8)
MPY-50U □-B5-A6(B5-A8)	D 53	MPY4-B5-A6(B5-A8)

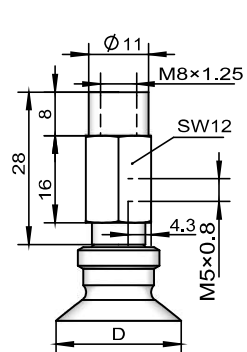
MPY 10 to 32 U □ B5-B5  
(M5×0.8 female thread)



MPY 10 to 50 U □ B5-B6  
(M6×1 female thread)



MPY 20 to 50 U □ B5-B8  
(M8×1.25 female thread)



Model	Size (mm)	Applicable adapter model
MPY-10U □-B5-B5(B5-B6)	D 12	MPY2-B5-B5(B5-B6)
MPY-13U □-B5-B5(B5-B6)	D 15	MPY2-B5-B5(B5-B6)
MPY-16U □-B5-B5(B5-B6)	D 18	MPY2-B5-B5(B5-B6)
MPY-20U □-B5-B5(B5-B6/B5-B8)	D 23	MPY3-B5-B5(B5-B6/B5-B8)
MPY-25U □-B5-B5(B5-B6/B5-B8)	D 28	MPY3-B5-B5(B5-B6/B5-B8)
MPY-32U □-B5-B5(B5-B6/B5-B8)	D 35	MPY3-B5-B5(B5-B6/B5-B8)
MPY-40U □-B5-B6(B5-B8)	D 43	MPY4-B5-B6(B5-B8)
MPY-50U □-B5-B6(B5-B8)	D 53	MPY4-B5-B6(B5-B8)

MP

MP2-PEEK

MP2-MT

MP2-MB

MP2-AN

MP2-W

MP3

MP-H/HB

MP3E

PFG

MP2-HT

MPU

MPC

MRP

MPK

MPLO

FGA

FG

FSGPL

MAF

MAB

MAOF

MAOB

MAX

MAXB

MPG

SPB2P

FGB-R

MF

MB

FDA

FDB

MGMX

MGML

MGMBH

MGMBG

MXC

MPOBF

MPB4

MXD

MW-HT

MU

MPE

MLE

# MP series

## Vacuum suction cup with adapter ( $\phi 2-\phi 50$ )

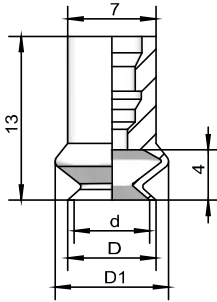


**AMILA**

### Design parameters of vacuum suction cup with adapter MP

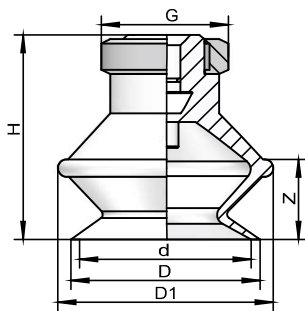
#### Size specification (mm)—Type-B suction cup

MP 06 to 08 B



Model	Size (mm)			Weight g
	D	D1	d	
MP06B □	7	9.1	6	0.4
MP08B □	9	10.1	8	0.4

MP 10 to 50 B

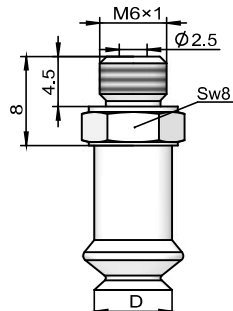
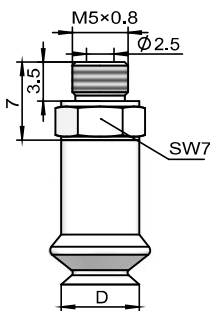


Model	Size (mm)						Weight g
	H	D	D1	d	G	Z	
MP10B □	16	12	14	10	13	5.5	1.1
MP13B □	18.5	15	19	13	13	7.5	1.7
MP16B □	20	18	21	16	13	8.5	2.1
MP20B □	23.5	22	25	20	15	10.5	2.9
MP25B □	24	27	28	25	15	10.5	3.9
MP32B □	29	34	37	32	15	14	6.7
MP40B □	34	43	48	40	18	16	13.3
MP50B □	38	53	57	50	18	19	18.8

#### Type-B suction cup ( $\phi 6.0-\phi 8.0\text{mm}$ )—Vacuum port in vertical direction

MPT 06 to 08 B □ A5  
(M5×0.8 male thread)

MPT 06 to 08 B □ A6  
(M6×1 male thread)



Model	Size (mm)		Applicable adapter model
		D	
MPT06B □ -A5(A6)	7		MPT1-A5(A6)
MPT08B □ -A5(A6)	9		MPT1-A5(A6)

# MP series

## Vacuum suction cup with adapter ( $\phi 2$ – $\phi 50$ )



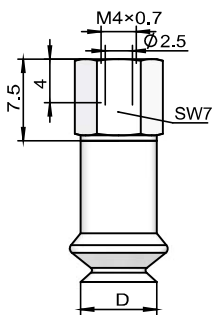
# AMILA

Vacuum suction

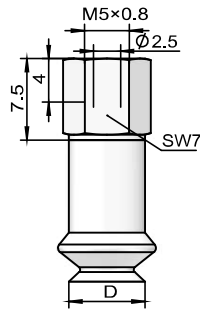
### Design parameters of vacuum suction cup with adapter MP

#### Type-B suction cup ( $\phi 6.0$ – $\phi 8.0$ mm)—Vacuum port in vertical direction

MPT 06 to 08 B □ B4  
(M4×0.7 female thread)



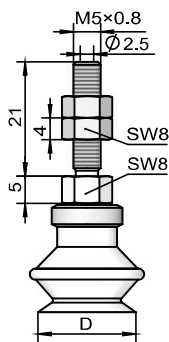
MPT 06 to 08 B □ B5  
(M5×0.8 female thread)



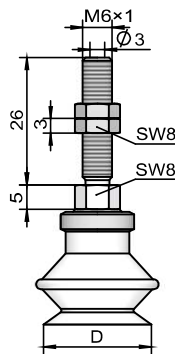
Model	Size (mm)		Applicable adapter model
	D		
MPT06B □ -B4(B5)	7		MPT1-B4(B5)
MPT08B □ -B4(B5)	9		MPT1-B4(B5)

#### Type-B suction cup ( $\phi 10$ – $\phi 50$ mm)—Vacuum port in vertical direction

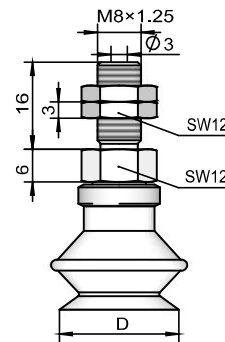
MPT 10 to 16 B □ A5  
(M5×0.8 male thread)



MPT 10 to 50 B □ A6  
(M6×1 male thread)



MPT 20 to 50 B □ A8  
(M8×1.25 male thread)



Model	Size (mm)		Applicable adapter model
	D		
MPT10B □ -A5(A6)	12		MPT2-A5(A6)
MPT13B □ -A5(A6)	15		MPT2-A5(A6)
MPT16B □ -A5(A6)	18		MPT2-A5(A6)
MPT20B □ -A6(A8)	23		MPT3-A6(A8)
MPT25B □ -A6(A8)	28		MPT3-A6(A8)
MPT32B □ -A6(A8)	35		MPT3-A6(A8)
MPT40B □ -A6(A8)	43		MPT4-A6(A8)
MPT50B □ -A6(A8)	53		MPT4-A6(A8)

MP

MP2-PEEK

MP2-MT

MP2-MB

MP2-AN

MP2-W

MP3

MP-H/HB

MP3E

PFG

MP2-HT

MPU

MPC

MRP

MPK

MPLO

FGA

FG

FSGPL

MAF

MAB

MAOF

MAOB

MAX

MAXB

MPG

SPB2P

FGB-R

MF

MB

FDA

FDB

MGMX

MGML

MGMBH

MGMBG

MXC

MPOBF

MPB4

MXD

MW-HT

MU

MPE

MLE

# MP series

## Vacuum suction cup with adapter ( $\phi 2$ – $\phi 50$ )

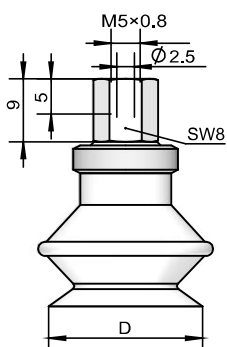


# AMILA

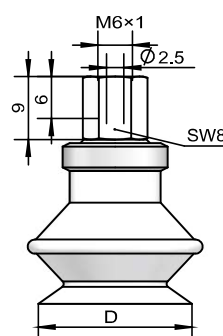
### Design parameters of vacuum suction cup with adapter MP

#### Type-B suction cup ( $\phi 10$ – $\phi 50$ mm)—Vacuum port in vertical direction

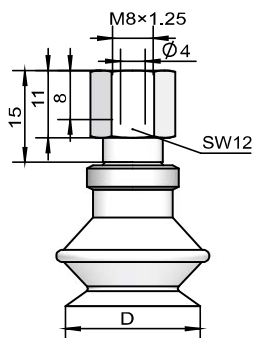
MPT 10 to 32 B □ B5  
(M5×0.8 female thread)



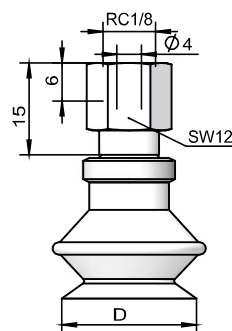
MPT 10 to 50 B □ B6  
(M6×1 female thread)



MPT 20 to 50 B □ B8  
(M8×1.25 female thread)



MPT 10 to 50 B □ B01  
(G1/8 female thread)



Model	Size (mm)		Applicable adapter model
		D	
MPT10B □ -B5(B6/B01)		12	MPT2-B5(B6/B01)
MPT13B □ -B5(B6/B01)		15	MPT2-B5(B6/B01)
MPT16B □ -B5(B6/B01)		18	MPT2-B5(B6/B01)
MPT20B □ -B5(B6/B8/B01)		23	MPT3-B5(B6/B8/B01)
MPT25B □ -B5(B6/B8/B01)		28	MPT3-B5(B6/B8/B01)
MPT32B □ -B5(B6/B8/B01)		35	MPT3-B5(B6/B8/B01)
MPT40B □ -B6(B8/B01)		43	MPT4-B6(B8/B01)
MPT50B □ -B6(B8/B01)		53	MPT4-B6(B8/B01)

# MP series

## Vacuum suction cup with adapter (φ2–φ50)



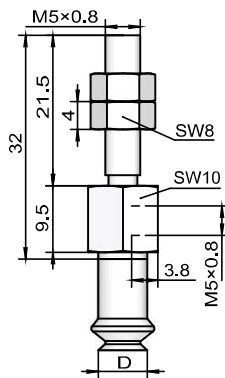
# AMILA

Vacuum suction

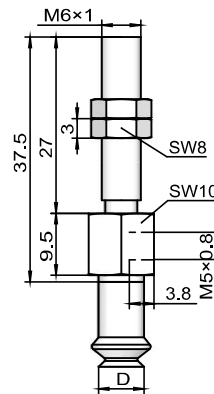
### Design parameters of vacuum suction cup with adapter MP

#### Type-B suction cup (φ6.0–φ8.0mm)—Vacuum port in horizontal direction

MPY 06 to 08 B □ B5-A5  
(M5×0.8 male thread)

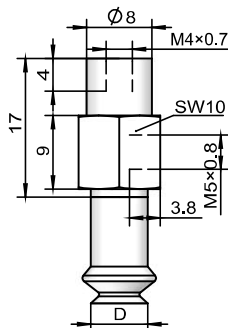


MPY 06 to 08 B □ B5-A6  
(M6×1 male thread)

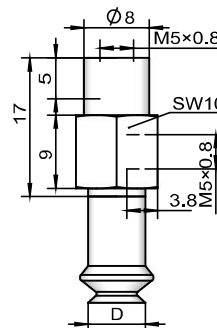


Model	Size (mm)	Applicable adapter model
MPY06B □-B5-A5(B5-A6)	D 7	MPY1-B5-A5(B5-A6)
MPY08B □-B5-A5(B5-A6)	D 9	MPY1-B5-A5(B5-A6)

MPY 06 to 08 B □ B5-B4  
(M4×0.7 female thread)



MPY 06 to 08 B □ B5-B5  
(M5×0.8 female thread)



Model	Size (mm)	Applicable adapter model
MPY06B □-B5-B4(B5-B5)	D 7	MPY1-B5-B4(B5-B5)
MPY08B □-B5-B4(B5-B5)	D 9	MPY1-B5-B4(B5-B5)

MP
MP2-PEEK
MP2-MT
MP2-MB
MP2-AN
MP2-W
MP3
MP-H/HB
MP3E
PFG
MP2-HT
MPU
MPC
MRP
MPK
MPLO
FGA
FG
FSGPL
MAF
MAB
MAOF
MAOB
MAX
MAXB
MPG
SPB2P
FGB-R
MF
MB
FDA
FDB
MGMX
MGML
MGMBH
MGMBG
MXC
MPOBF
MPB4
MXD
MW-HT
MU
MPE
MLE

# MP series



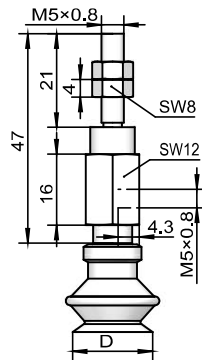
# AMILA

## Vacuum suction cup with adapter ( $\phi 2$ – $\phi 50$ )

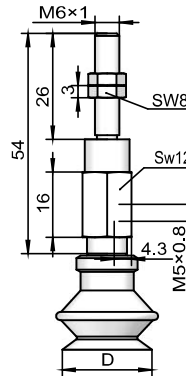
### Design parameters of vacuum suction cup with adapter MP

#### Type-B suction cup ( $\phi 10$ – $\phi 50$ mm)—Vacuum port in horizontal direction

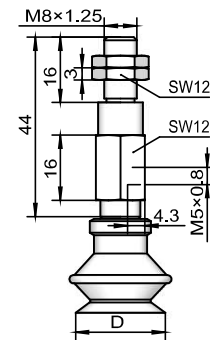
MPY 10 to 16 B □ B5-A5  
(M5×0.8 male thread)



MPY 10 to 50 B □ B5-A6  
(M6×1 male thread)

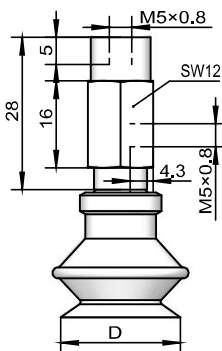


MPY 20 to 50 B □ B5-A8  
(M8×1.25 male thread)

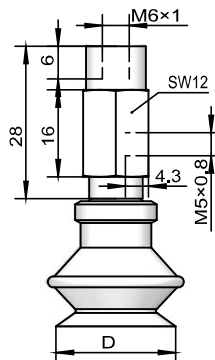


Model	Size (mm)		Applicable adapter model
		D	
MPY10B □-B5-A5(B5-A6)		12	MPY2-B5-A5(B5-A6)
MPY13B □-B5-A5(B5-A6)		15	MPY2-B5-A5(B5-A6)
MPY16B □-B5-A5(B5-A6)		18	MPY2-B5-A5(B5-A6)
MPY20B □-B5-A6(B5-A8)		23	MPY3-B5-A6(B5-A8)
MPY25B □-B5-A6(B5-A8)		28	MPY3-B5-A6(B5-A8)
MPY32B □-B5-A6(B5-A8)		35	MPY3-B5-A6(B5-A8)
MPY40B □-B5-A6(B5-A8)		43	MPY4-B5-A6(B5-A8)
MPY50B □-B5-A6(B5-A8)		53	MPY4-B5-A6(B5-A8)

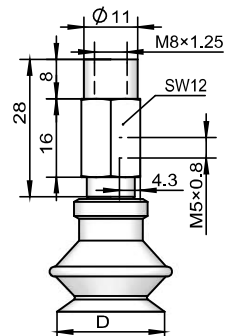
MPY 10 to 32 B □ B5-B5  
(M5×0.8 female thread)



MPY 10 to 50 B □ B5-B6  
(M6×1 female thread)



MPY 20 to 50 B □ B5-B8  
(M8×1.25 female thread)



Model	Size (mm)		Applicable adapter model
		D	
MPY10B □-B5-B5(B5-B6)		12	MPY2-B5-B5(B5-B6)
MPY13B □-B5-B5(B5-B6)		15	MPY2-B5-B5(B5-B6)
MPY16B □-B5-B5(B5-B6)		18	MPY2-B5-B5(B5-B6)
MPY20B □-B5-B5(B5-B6/B5-B8)		23	MPY3-B5-B5(B5-B6/B5-B8)
MPY25B □-B5-B5(B5-B6/B5-B8)		28	MPY3-B5-B5(B5-B6/B5-B8)
MPY32B □-B5-B5(B5-B6/B5-B8)		35	MPY3-B5-B5(B5-B6/B5-B8)
MPY40B □-B5-B6(B5-B8)		43	MPY4-B5-B6(B5-B8)
MPY50B □-B5-B6(B5-B8)		53	MPY4-B5-B6(B5-B8)

# MP series

## Vacuum suction cup with adapter (φ2–φ50)



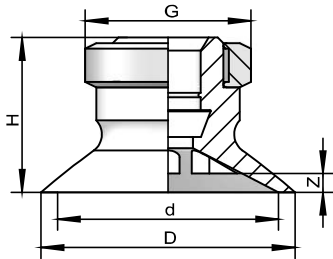
# AMILA

Vacuum  
suction

### Design parameters of vacuum suction cup with adapter MP

#### Size specification (mm)—Type-C suction cup

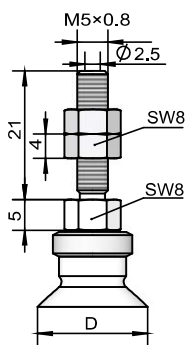
MPT 10 to 50 C



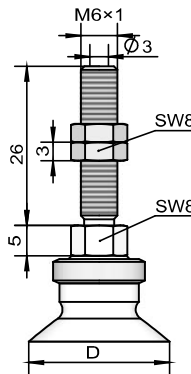
Model	Size [mm]						Weight g
	H	D	d	G	Z		
MP10C □	12	12	10	13	1.7	0.8	
MP13C □	12	15	13	13	1.8	1	
MP16C □	12.5	18	16	13	1.2	0.9	
MP20C □	14	23	20	15	1.7	1.6	
MP25C □	14	28	25	15	1.8	2.1	
MP32C □	14.5	35	32	15	2.3	2.4	
MP40C □	18.5	43	40	18	3.3	5.5	
MP50C □	19.5	53	50	18	3.8	7.3	

#### Type-C suction cup (φ10–φ50mm)—Vacuum port in vertical direction

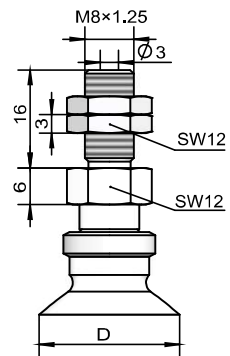
MPT 10 to 16 C □ A5  
(M5×0.8 male thread)



MPT 10 to 50 C □ A6  
(M6×1 male thread)



MPT 20 to 50 C □ A8  
(M8×1.25 male thread)



Model	Size (mm)		Applicable adapter model
	D		
MPT10C □ -A5(A6)	12		MPT2-A5(A6)
MPT13C □ -A5(A6)	15		MPT2-A5(A6)
MPT16C □ -A5(A6)	18		MPT2-A5(A6)
MPT20C □ -A6(A8)	23		MPT3-A6(A8)
MPT25C □ -A6(A8)	28		MPT3-A6(A8)
MPT32C □ -A6(A8)	35		MPT3-A6(A8)
MPT40C □ -A6(A8)	43		MPT4-A6(A8)
MPT50C □ -A6(A8)	53		MPT4-A6(A8)

MP

MP2-PEEK

MP2-MT

MP2-MB

MP2-AN

MP2-W

MP3

MP-H/HB

MP3E

PFG

MP2-HT

MPU

MPC

MRP

MPK

MPLO

FGA

FG

FSGPL

MAF

MAB

MAOF

MAOB

MAX

MAXB

MPG

SPB2P

FGB-R

MF

MB

FDA

FDB

MGMX

MGML

MGMBH

MGMBG

MXC

MPOBF

MPB4

MXD

MW-HT

MU

MPE

MLE

# MP series

## Vacuum suction cup with adapter ( $\phi 2$ – $\phi 50$ )

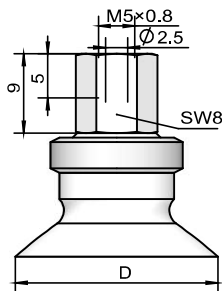


# AMILA

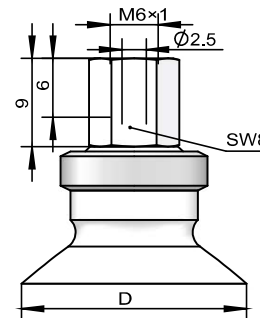
### Design parameters of vacuum suction cup with adapter MP

#### Type-C suction cup ( $\phi 10$ – $\phi 50$ mm)—Vacuum port in vertical direction

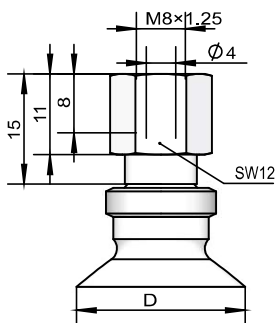
MPT 10 to 32 C □ B5  
(M5×0.8 female thread)



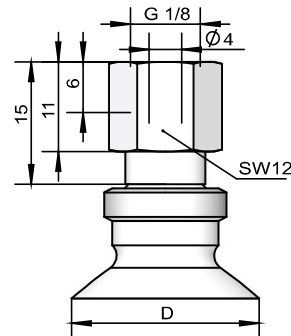
MPT 10 to 50 C □ B6  
(M6×1 female thread)



MPT 20 to 50 C □ B8  
(M8×1.25 female thread)



MPT 10 to 50 C □ B01  
(G1/8 female thread)



Model	Size (mm)		Applicable adapter model
		D	
MPT10C □ -B5(B6/B01)		12	MPT2-B5(B6/B01)
MPT13C □ -B5(B6/B01)		15	MPT2-B5(B6/B01)
MPT16C □ -B5(B6/B01)		18	MPT2-B5(B6/B01)
MPT20C □ -B5(B6/B8/B01)		23	MPT3-B5(B6/B8/B01)
MPT25C □ -B5(B6/B8/B01)		28	MPT3-B5(B6/B8/B01)
MPT32C □ -B5(B6/B8/B01)		35	MPT3-B5(B6/B8/B01)
MPT40C □ -B6(B8/B01)		43	MPT4-B6(B8/B01)
MPT50C □ -B6(B8/B01)		53	MPT4-B6(B8/B01)

# MP series

## Vacuum suction cup with adapter ( $\phi 2\text{--}\phi 50$ )



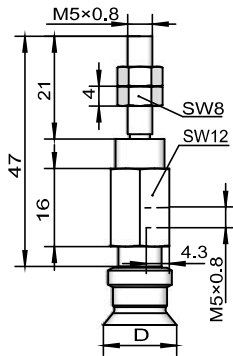
# AMILA

Vacuum suction

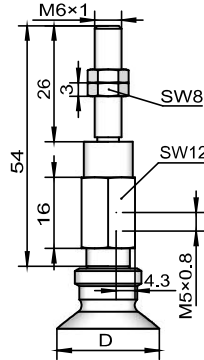
### Design parameters of vacuum suction cup with adapter MP

#### Type-C suction cup ( $\phi 10\text{--}\phi 50\text{mm}$ )—Vacuum port in horizontal direction

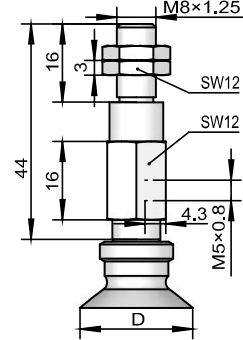
MPY 10 to 16 C □ B5-A5  
(M5×0.8 male thread)



MPY 10 to 50 C □ B5-A6  
(M6×1 male thread)

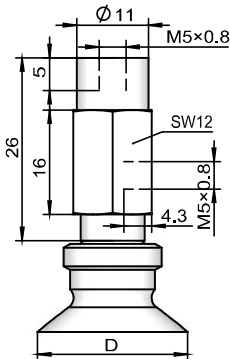


MPY 20 to 50 C □ B5-A8  
(M8×1.25 male thread)

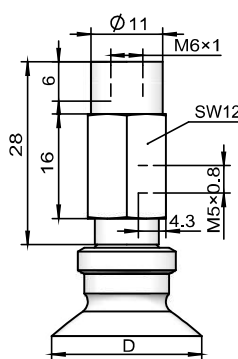


Model	Size (mm)		Applicable adapter model
		D	
MPY10C □ -B5-A5(B5-A6)		12	MPY2-B5-A5(B5-A6)
MPY13C □ -B5-A5(B5-A6)		15	MPY2-B5-A5(B5-A6)
MPY16C □ -B5-A5(B5-A6)		18	MPY2-B5-A5(B5-A6)
MPY20C □ -B5-A6(B5-A8)		23	MPY3-B5-A6(B5-A8)
MPY25C □ -B5-A6(B5-A8)		28	MPY3-B5-A6(B5-A8)
MPY32C □ -B5-A6(B5-A8)		35	MPY3-B5-A6(B5-A8)
MPY40C □ -B5-A6(B5-A8)		43	MPY4-B5-A6(B5-A8)
MPY50C □ -B5-A6(B5-A8)		53	MPY4-B5-A6(B5-A8)

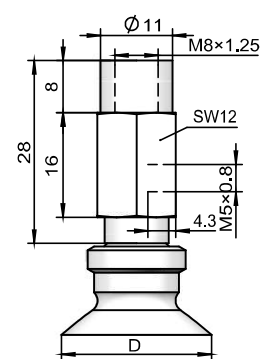
MPY 10 to 32 C □ B5-B5  
(M5×0.8 female thread)



MPY 10 to 50 C □ B5-B6  
(M6×1 female thread)



MPY 20 to 50 C □ B5-B8  
(M8×1.25 female thread)



Model	Size (mm)		Applicable adapter model
		D	
MPY10C □ -B5-B5(B5-B6)		12	MPY2-B5-B5(B5-B6)
MPY13C □ -B5-B5(B5-B6)		15	MPY2-B5-B5(B5-B6)
MPY16C □ -B5-B5(B5-B6)		18	MPY2-B5-B5(B5-B6)
MPY20C □ -B5-B5(B5-B6/B5-B8)		23	MPY3-B5-B5(B5-B6/B5-B8)
MPY25C □ -B5-B5(B5-B6/B5-B8)		28	MPY3-B5-B5(B5-B6/B5-B8)
MPY32C □ -B5-B5(B5-B6/B5-B8)		35	MPY3-B5-B5(B5-B6/B5-B8)
MPY40C □ -B5-B6(B5-B8)		43	MPY4-B5-B6(B5-B8)
MPY50C □ -B5-B6(B5-B8)		53	MPY4-B5-B6(B5-B8)

MP

MP2-PEEK

MP2-MT

MP2-MB

MP2-AN

MP2-W

MP3

MP-H/HB

MP3E

PFG

MP2-HT

MPU

MPC

MRP

MPK

MPLO

FGA

FG

FSGPL

MAF

MAB

MAOF

MAOB

MAX

MAXB

MPG

SPB2P

FGB-R

MF

MB

FDA

FDB

MGMX

MGML

MGMBH

MGMBG

MXC

MPOBF

MPB4

MXD

MW-HT

MU

MPE

MLE

# MP series

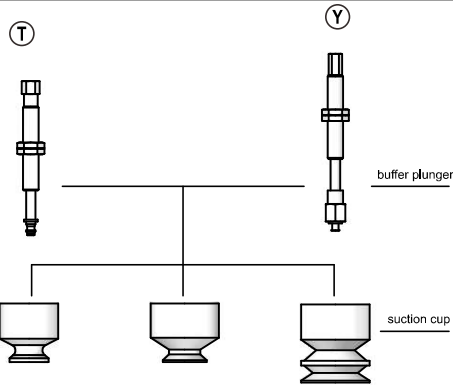


# AMILA

## Vacuum suction cup with buffer plunger ( $\phi 2\text{--}\phi 50$ )



3C product



System design of MP vacuum suction cup with buffer plunger

### Structure

- ◆ The product consists of a replaceable suction cup and a buffer plunger
- ◆ The suction cup is equipped with a plug-in joint in the connecting position
- ◆ The vacuum port in vertical direction is installed with a male threaded nut
- ◆ The vacuum port in horizontal direction is installed with a male threaded nut

### Guide to purchase of MP vacuum suction cup with buffer plunger

## MP T 02 U N J 6 B3-A8

① ② ③ ④ ⑤ ⑥ ⑦ ⑧

① Product series	② Vacuum port direction	③ Size specification	④ Shape specification
MP	T - Vertical Y - Horizontal	02 - $\phi 2.0\text{mm}$ 16 - $\phi 16\text{mm}$ 04 - $\phi 4.0\text{mm}$ 20 - $\phi 20\text{mm}$ 06 - $\phi 6.0\text{mm}$ 25 - $\phi 25\text{mm}$ 08 - $\phi 8.0\text{mm}$ 32 - $\phi 32\text{mm}$ 10 - $\phi 10\text{mm}$ 40 - $\phi 40\text{mm}$ 13 - $\phi 13\text{mm}$ 50 - $\phi 50\text{mm}$	U - Flat B - Bellows-type C - Ribbed-flat type
⑤ Material of suction cup	⑥ Slewing mode	⑦ Buffering stroke	⑧ The specification of vacuum port and installation thread
N-nitrile rubber S-silicone rubber GN- static-proof nitrile rubber (Static resistance index: $10^5\text{--}10^9$ ) GS- static-proof silicone rubber (Static resistance index: $10^5\text{--}10^9$ ) GHN-traceless conductive nitrile rubber (Static resistance index: $10^5\text{--}10^9$ )	J - Slewing K - Non-slewing	6 - 6mm 10 - 10mm 15 - 15mm 20 - 20mm 25 - 25mm 30 - 30mm 40 - 40mm 50 - 50mm	B3-A8—vacuum port with M3×0.5 female thread fitted to M8×1 male thread B5-A8—vacuum port with M5×0.8 female thread fitted to M8×1 male thread B5-A10—vacuum port with M5×0.8 female thread fitted to M10×1 male thread B5-A14—vacuum port with M5×0.8 female thread fitted to M14×1 female thread B01-A14—Vacuum port with RC1/8 female thread fitted to M14×1 female thread

# MP series

## Vacuum suction cup with buffer plunger ( $\phi 2-\phi 50$ )



**AMILA**

Vacuum suction

### Model specifications of MP small vacuum suction cup with buffer plunger

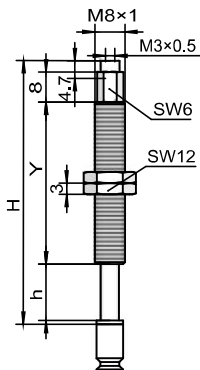
Model specification	Shape specification			Vacuum port direction		Slewing mode		Buffering stroke	Vacuum port and installation thread specification	
	U	B	C	T (Vertical)	Y (Horizontal)	J (Slewing)	K (Non-slewing)			
$\phi 2.0$	●	-	-	●	●	●	●	6 10 15 20 25	B3-A8	B5-A8
$\phi 4.0$	●	-	-	●	●	●	●	6 10 15 20 25	B3-A8	B5-A8
$\phi 6.0$	●	●	-	●	●	●	●	6 10 15 20 25	B3-A8	B5-A8
$\phi 8.0$	●	●	-	●	●	●	●	6 10 15 20 25	B3-A8	B5-A8
$\phi 10$	●	●	●	●	●	●	●	10 20 30 40 50		B5-A10
$\phi 13$	●	●	●	●	●	●	●	10 20 30 40 50		B5-A10
$\phi 16$	●	●	●	●	●	●	●	10 20 30 40 50		B5-A10
$\phi 20$	●	●	●	●	●	●	●	10 20 30 40 50		B5-A10
$\phi 25$	●	●	●	●	●	●	●	10 20 30 40 50		B5-A10
$\phi 32$	●	●	●	●	●	●	●	10 20 30 40 50		B5-A10
$\phi 40$	●	●	●	●	●	●	●	10 20 30 50	B5-A14	B01-A14
$\phi 50$	●	●	●	●	●	●	●	10 20 30 50	B5-A14	B01-A14

### Design parameters of MP small vacuum suction cup with buffer plunger

MPT...B3-A8

Vertical and slewing

Vertical and non-slewing

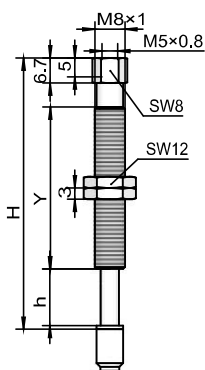


Model	Size (mm)			Applicable suction cup	Applicable buffer plunger model
	H	h	Y		
MPT □ J6B3-A8	32	6	15	MP02to08U MP06to08B	MPT1 J6 B3-A8
MPT □ J10B3-A8	65	10	43	MP02to08U MP06to08B	MPT1 J10 B3-A8
MPT □ J15B3-A8	70	15	43	MP02to08U MP06to08B	MPT1 J15 B3-A8
MPT □ J25B3-A8	80	20	43	MP02to08U MP06to08B	MPT1 J25 B3-A8
MPT □ K6B3-A8	32	6	15	MP02to08U MP06to08B	MPT1 K6 B3-A8
MPT □ K10B3-A8	65	10	43	MP02to08U MP06to08B	MPT1 K10 B3-A8
MPT □ K15B3-A8	70	15	43	MP02to08U MP06to08B	MPT1 K15 B3-A8
MPT □ K25B3-A8	80	20	43	MP02to08U MP06to08B	MPT1 K25 B3-A8

MPT...B5-A8

Vertical and slewing

Vertical and non-slewing



Model	Size (mm)			Applicable suction cup	Applicable buffer plunger model
	H	h	Y		
MPT □ J6B5-A8	34	6	15	MP02to08U MP06to08B	MPT1 J6 B5-A8
MPT □ J10B5-A8	67	10	43	MP02to08U MP06to08B	MPT1 J10 B5-A8
MPT □ J15B5-A8	72	15	43	MP02to08U MP06to08B	MPT1 J15 B5-A8
MPT □ J25B5-A8	82	20	43	MP02to08U MP06to08B	MPT1 J25 B5-A8
MPT □ K6B5-A8	34	6	15	MP02to08U MP06to08B	MPT1 K6 B5-A8
MPT □ K10B5-A8	67	10	43	MP02to08U MP06to08B	MPT1 K10 B5-A8
MPT □ K15B5-A8	72	15	43	MP02to08U MP06to08B	MPT1 K15 B5-A8
MPT □ K25B5-A8	72	20	43	MP02to08U MP06to08B	MPT1 K25 B5-A8

MP
MP2-PEEK
MP2-MT
MP2-MB
MP2-AN
MP2-W
MP3
MP-H/HB
MP3E
PFG
MP2-HT
MPU
MPC
MRP
MPK
MPLO
FGA
FG
FSGPL
MAF
MAB
MAOF
MAOB
MAX
MAXB
MPG
SPB2P
FGB-R
MF
MB
FDA
FDB
MGMX
MGML
MGMBH
MGMBG
MXC
MPOBF
MPB4
MXD
MW-HT
MU
MPE
MLE

# MP series



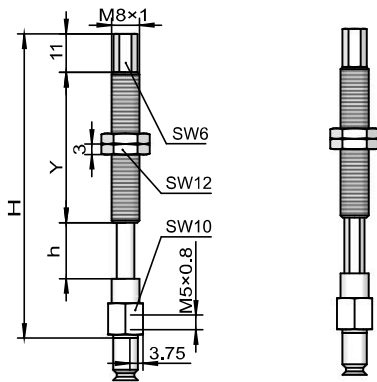
# AMILA

## Vacuum suction cup with buffer plunger ( $\phi 2-\phi 50$ )

### Design parameters of MP small vacuum suction cup with buffer plunger

MPY...B5-A8

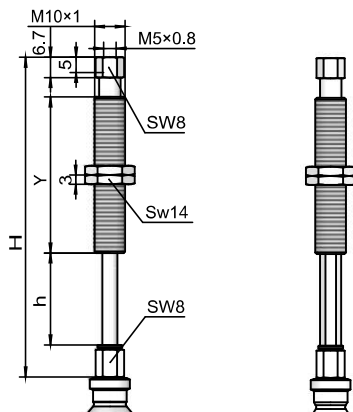
Horizontally slewing      Horizontally non-slewing



Model	Size (mm)			Applicable suction cup	Applicable buffer plunger model
	H	h	Y		
MPY □ J6B5-A8	51	6	15	MP02to08U MP06to08B	MPY1 J6 B5-A8
MPY □ J10B5-A8	82	10	43	MP02to08U MP06to08B	MPY1 J10 B5-A8
MPY □ J15B5-A8	87	15	43	MP02to08U MP06to08B	MPY1 J15 B5-A8
MPY □ J25B5-A8	97	25	43	MP02to08U MP06to08B	MPY1 J25 B5-A8
MPY □ K6B5-A8	51	6	15	MP02to08U MP06to08B	MPY1 K6 B5-A8
MPY □ K10B5-A8	82	10	43	MP02to08U MP06to08B	MPY1 K10 B5-A8
MPY □ K15B5-A8	87	15	43	MP02to08U MP06to08B	MPY1 K15 B5-A8
MPY □ K25B5-A8	97	25	43	MP02to08U MP06to08B	MPY1 K25 B5-A8

MPT...B5-A10

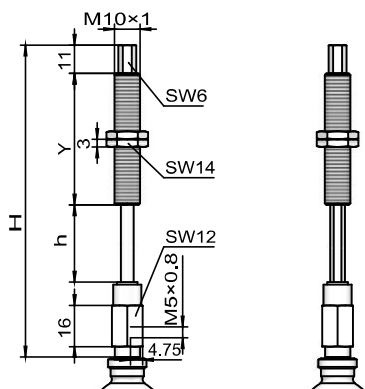
Vertical and slewing      Vertical and non-slewing



Model	Size (mm)			Applicable suction cup	Applicable buffer plunger model
	H	h	Y		
MPT □ J10B5-A10	56.5	10	23	MP10to16U(B/C)	MPT2 J10 B5-A10
MPT □ J20B5-A10	94.5	20	51	MP10to16U(B/C)	MPT2 J20 B5-A10
MPT □ J30B5-A10	104.5	30	51	MP10to16U(B/C)	MPT2 J30 B5-A10
MPT □ J40B5-A10	140.5	40	77	MP10to16U(B/C)	MPT2 J40 B5-A10
MPT □ J50B5-A10	150.5	50	77	MP10to16U(B/C)	MPT2 J50 B5-A10
MPT □ K10B5-A10	56.5	10	23	MP10to16U(B/C)	MPT2 K10 B5-A10
MPT □ K20B5-A10	94.5	20	51	MP10to16U(B/C)	MPT2 K20 B5-A10
MPT □ K30B5-A10	104.5	30	51	MP10to16U(B/C)	MPT2 K30 B5-A10
MPT □ K40B5-A10	140.5	40	77	MP10to16U(B/C)	MPT2 K40 B5-A10
MPT □ K50B5-A10	150.5	50	77	MP10to16U(B/C)	MPT2 K50 B5-A10

MPY...B5-A10

Horizontally slewing      Horizontally non-slewing



Model	Size (mm)			Applicable suction cup	Applicable buffer plunger model
	H	h	Y		
MPY □ J10B5-A10	71.5	10	23	MP10to16U(B/C)	MPY2 J10 B5-A10
MPY □ J20B5-A10	109.5	20	51	MP10to16U(B/C)	MPY2 J20 B5-A10
MPY □ J30B5-A10	119.5	30	51	MP10to16U(B/C)	MPY2 J30 B5-A10
MPY □ J40B5-A10	155.5	40	77	MP10to16U(B/C)	MPY2 J40 B5-A10
MPY □ J50B5-A10	165.5	50	77	MP10to16U(B/C)	MPY2 J50 B5-A10
MPY □ K10B5-A10	71.5	10	23	MP10to16U(B/C)	MPY2 K10 B5-A10
MPY □ K20B5-A10	109.5	20	51	MP10to16U(B/C)	MPY2 K20 B5-A10
MPY □ K30B5-A10	119.5	30	51	MP10to16U(B/C)	MPY2 K30 B5-A10
MPY □ K40B5-A10	155.5	40	77	MP10to16U(B/C)	MPY2 K40 B5-A10
MPY □ K50B5-A10	165.5	50	77	MP10to16U(B/C)	MPY2 K50 B5-A10

# MP series

## Vacuum suction cup with buffer plunger ( $\phi 2-\phi 50$ )



# AMILA

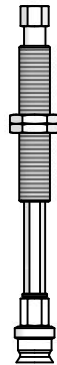
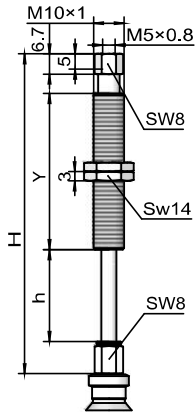
Vacuum suction

### Design parameters of MP small vacuum suction cup with buffer plunger

MPT...B5-A10

Vertical and slewing

Vertical and non-slewing

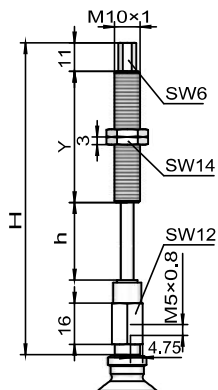


Model	Size (mm)			Applicable suction cup	Applicable buffer plunger model
	H	h	Y		
MPT □ J10B5-A10	56.5	10	23	MP20to32U(B/C)	MPT3 J10 B5-A10
MPT □ J20B5-A10	94.5	20	51	MP20to32U(B/C)	MPT3 J20 B5-A10
MPT □ J30B5-A10	104.5	30	51	MP20to32U(B/C)	MPT3 J30 B5-A10
MPT □ J40B5-A10	140.5	40	77	MP20to32U(B/C)	MPT3 J40 B5-A10
MPT □ J50B5-A10	150.5	50	77	MP20to32U(B/C)	MPT3 J50 B5-A10
MPT □ K10B5-A10	56.5	10	23	MP20to32U(B/C)	MPT3 K10 B5-A10
MPT □ K20B5-A10	94.5	20	51	MP20to32U(B/C)	MPT3 K20 B5-A10
MPT □ K30B5-A10	104.5	30	51	MP20to32U(B/C)	MPT3 K30 B5-A10
MPT □ K40B5-A10	140.5	40	77	MP20to32U(B/C)	MPT3 K40 B5-A10
MPT □ K50B5-A10	150.5	50	77	MP20to32U(B/C)	MPT3 K50 B5-A10

MPY...B5-A10

Horizontally slewing

Horizontally non-slewing

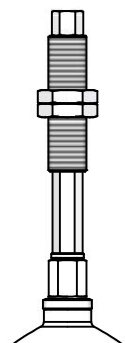
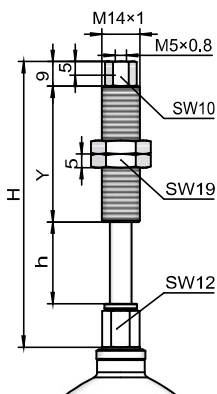


Model	Size (mm)			Applicable suction cup	Applicable buffer plunger model
	H	h	Y		
MPY □ J10B5-A10	71.5	10	23	MP20to32U(B/C)	MPY3 J10 B5-A10
MPY □ J20B5-A10	109.5	20	51	MP20to32U(B/C)	MPY3 J20 B5-A10
MPY □ J30B5-A10	119.5	30	51	MP20to32U(B/C)	MPY3 J30 B5-A10
MPY □ J40B5-A10	155.5	40	77	MP20to32U(B/C)	MPY3 J40 B5-A10
MPY □ J50B5-A10	165.5	50	77	MP20to32U(B/C)	MPY3 J50 B5-A10
MPY □ K10B5-A10	71.5	10	23	MP20to32U(B/C)	MPY3 K10 B5-A10
MPY □ K20B5-A10	109.5	20	51	MP20to32U(B/C)	MPY3 K20 B5-A10
MPY □ K30B5-A10	119.5	30	51	MP20to32U(B/C)	MPY3 K30 B5-A10
MPY □ K40B5-A10	155.5	40	77	MP20to32U(B/C)	MPY3 K40 B5-A10
MPY □ K50B5-A10	165.5	50	77	MP20to32U(B/C)	MPY3 K50 B5-A10

MPT...B5-A14

Vertical and slewing

Vertical and non-slewing



Model	Size (mm)			Applicable suction cup	Applicable buffer plunger model
	H	h	Y		
MPT □ J10B5-A14	91	10	50	MP40to50U(B/C)	MPT4 J10 B5-A14
MPT □ J20B5-A14	95	20	50	MP40to50U(B/C)	MPT4 J20 B5-A14
MPT □ J30B5-A14	105	30	50	MP40to50U(B/C)	MPT4 J30 B5-A14
MPT □ J50B5-A14	150	50	75	MP40to50U(B/C)	MPT4 J50 B5-A14
MPT □ K10B5-A14	91	10	50	MP40to50U(B/C)	MPT4 K10 B5-A14
MPT □ K20B5-A14	95	20	50	MP40to50U(B/C)	MPT4 K20 B5-A14
MPT □ K30B5-A14	105	30	50	MP40to50U(B/C)	MPT4 K30 B5-A14
MPT □ K50B5-A14	150	50	75	MP40to50U(B/C)	MPT4 K50 B5-A14

MP

MP2-PEEK

MP2-MT

MP2-MB

MP2-AN

MP2-W

MP3

MP-H/HB

MP3E

PFG

MP2-HT

MPU

MPC

MRP

MPK

MPLO

FGA

FG

FSGPL

MAF

MAB

MAOF

MAOB

MAX

MAXB

MPG

SPB2P

FGB-R

MF

MB

FDA

FDB

MGMX

MGML

MGMBH

MGMBG

MXC

MPOBF

MPB4

MXD

MW-HT

MU

MPE

MLE

# MP series



# AMILA

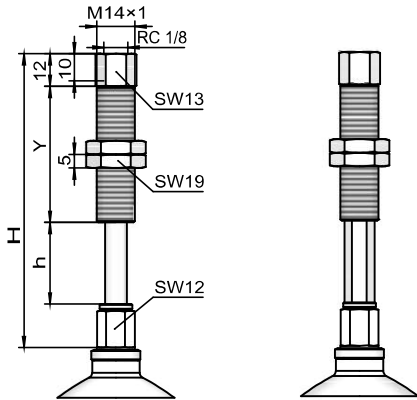
## Vacuum suction cup with buffer plunger ( $\phi 2-\phi 50$ )

### Design parameters of MP small vacuum suction cup with buffer plunger

MPT...B01-A14

Vertical and slewing

Vertical and non-slewing

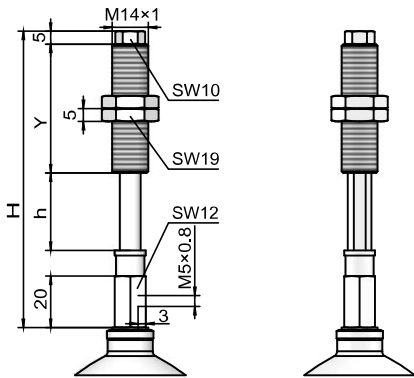


Model	Size (mm)			Applicable suction cup	Applicable buffer plunger model
	H	h	Y		
MPT □ J10B01-A14	92.5	10	50	MP40to50U(B/C)	MPT4 J10 B01-A14
MPT □ J20B01-A14	98	20	50	MP40to50U(B/C)	MPT4 J20 B01-A14
MPT □ J30B01-A14	108	30	50	MP40to50U(B/C)	MPT4 J30 B01-A14
MPT □ J50B01-A14	153	50	75	MP40to50U(B/C)	MPT4 J50 B01-A14
MPT □ K10B01-A14	92.5	10	50	MP40to50U(B/C)	MPT4 K10 B01-A14
MPT □ K20B01-A14	98	20	50	MP40to50U(B/C)	MPT4 K20 B01-A14
MPT □ K30B01-A14	108	30	50	MP40to50U(B/C)	MPT4 K30 B01-A14
MPT □ K50B01-A14	153	50	75	MP40to50U(B/C)	MPT4 K50 B01-A14

MPY...B5-A14

Horizontally slewing

Horizontally non-slewing



Model	Size (mm)			Applicable suction cup	Applicable buffer plunger model
	H	h	Y		
MPY □ J10B5-A14	108	10	50	MP40to50U(B/C)	MPY4 J10 B5-A14
MPY □ J20B5-A14	105	20	50	MP40to50U(B/C)	MPY4 J20 B5-A14
MPY □ J30B5-A14	115	30	50	MP40to50U(B/C)	MPY4 J30 B5-A14
MPY □ J50B5-A14	160	50	75	MP40to50U(B/C)	MPY4 J50 B5-A14
MPY □ K10B5-A14	108	10	50	MP40to50U(B/C)	MPY4 K10 B5-A14
MPY □ K20B5-A14	105	20	50	MP40to50U(B/C)	MPY4 K20 B5-A14
MPY □ K30B5-A14	115	30	50	MP40to50U(B/C)	MPY4 K30 B5-A14
MPY □ K50B5-A14	160	50	75	MP40to50U(B/C)	MPY4 K50 B5-A14