

# MP2-PEEK series

Vacuum suction cup core (traceless suction solution)



**AMILA**

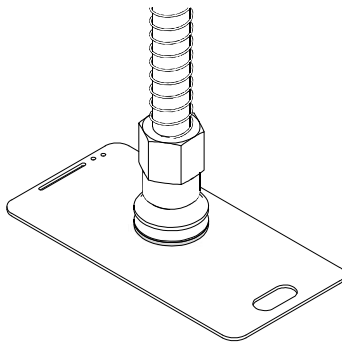
Vacuum suction



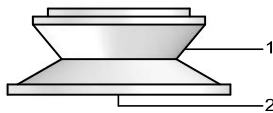
3C product



MP2-PEEK vacuum suction cup



Application of the MP2-PEEK vacuum suction cup



System design of MP2-PEEK vacuum suction cup

## Introduction

- ◆ Equipped with a core made of the PEEK material on the basis of the MPT Type-B bellows series, the traceless suction cup core of this series can effectively prevent the suction cup made of rubber from adhering to the suctioned object so as to achieve traceless suction.

## Application

- ◆ Mainly suitable for applications with requirements for suction trace, e.g. semiconductor, display and photovoltaic industries, etc.

## Structure

- ◆ (1) Suction cup connecting part
- ◆ (2) Suction surface

MP

MP2-PEEK

MP2-MT

MP2-MB

MP2-AN

MP2-W

MP3

MP-H/HB

MP3E

PFG

MP2-HT

MPU

MPC

MRP

MPK

MPLO

FGA

FG

FSGPL

MAF

MAB

MAOF

MAOB

MAX

MAXB

MPG

SPB2P

FGB-R

MF

MB

FDA

FDB

MGMX

MGML

MGMBH

MGMBG

MXC

MPOBF

MPB4

MXD

MW-HT

MU

MPE

MLE

# MP2-PEEK series



**AMILA**

Vacuum suction cup core (traceless suction solution)

[MP2 vacuum suction cup core purchase guide](#)

## MP2 - 06 PEEK

①      ②      ③

① Product series	② Size specification	③ Cup core material
MP2	06 - $\phi$ 6mm 08 - $\phi$ 8mm 10 - $\phi$ 10mm 13 - $\phi$ 13mm 16 - $\phi$ 16mm 20 - $\phi$ 20mm 25 - $\phi$ 25mm 32 - $\phi$ 32mm	PEEK - Polyether ether ketone PGEK - Static-proof polyether ether ketone

[Mp2 Material data](#)

Model	Material	Rockwell hardness HRC	Applicable temperature range	Color	Surface specific resistance	Applicable suction cup diameter
PEEK	Polyether ether ketone	105	-10~250°C	Beige	-	$\phi$ 6~ $\phi$ 32
PGEK	Static-proof polyether ether ketone	105	-10~250°C	Black	$10^4 \sim 10^8 \Omega \cdot \text{cm}$	$\phi$ 6~ $\phi$ 32

# MP2-PEEK series

Vacuum suction cup core (traceless suction solution)

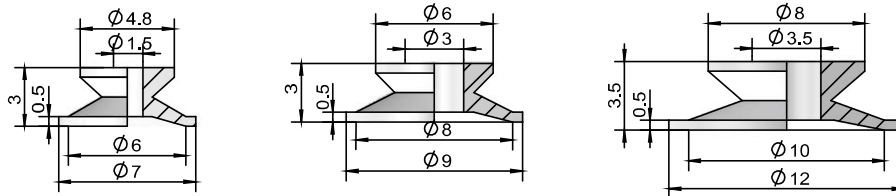


# AMILA

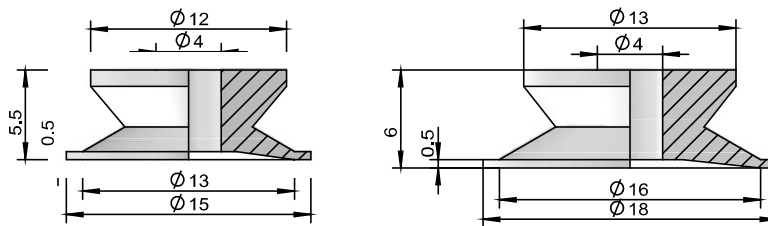
Vacuum  
suction

## Design parameters of MP2 vacuum suction cup core

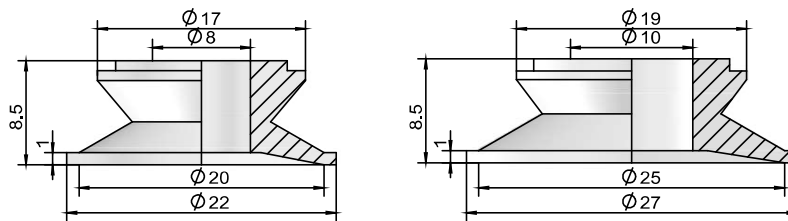
MP2-06 to 10 □



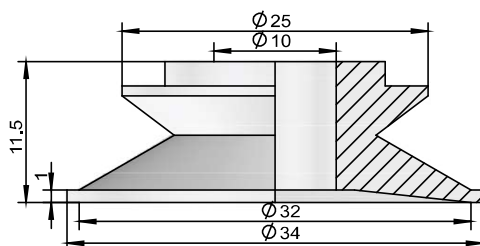
MP2-13 to 16 □



MP2-20 to 25 □



MP2-32 □



MP
MP2-PEEK
MP2-MT
MP2-MB
MP2-AN
MP2-W
MP3
MP-H/HB
MP3E
PFG
MP2-HT
MPU
MPC
MRP
MPK
MPLO
FGA
FG
FSGPL
MAF
MAB
MAOF
MAOB
MAX
MAXB
MPG
SPB2P
FGB-R
MF
MB
FDA
FDB
MGMX
MGML
MGMBH
MGMBG
MXC
MPOBF
MPB4
MXD
MW-HT
MU
MPE
MLE